



Artist's Impression



Artist's Impression



Artist's Impression



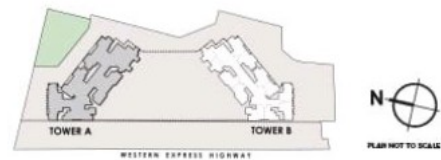
Artist's Impression



Artist's Impression



## TOWER A TYPICAL FLOOR PLAN



The project is currently marketed as World Above, (exclusively for 37<sup>th</sup> floors and above), and is registered on the MahaRERA website as Greenairy bearing MahaRERA registration no. P51800035093 Available on <https://maharera.mahaonline.gov.in>.

 **BORIVALI, WEH**

The layout of the unit plan displayed is for indicative purposes only and is not a part of the standard offering. The furniture, fixtures, design and other arrangements as depicted above are not part of the standard offerings to be provided and are purely demonstrative. The areas and dimensions shown are as per the plans approved/to be approved by the concerned authority and the same are subject to construction exigencies and variations. Intending purchasers are requested to verify all the details before acting in any manner with respect to the project. Project is financed by Piramal Trusteeship Services Private Limited.



MAHARERA QR CODE



## TOWER B TYPICAL FLOOR PLAN



The project is currently marketed as World Above, (exclusively for 37<sup>th</sup> floors and above), and is registered on the MahaRERA website as Greenairy bearing MahaRERA registration no. P51800035093 Available on <https://maharera.mahaonline.gov.in>.

**BORIVALI, WEH**

The layout of the unit plan displayed is for indicative purposes only and is not a part of the standard offering. The furniture, fixtures, design and other arrangements as depicted above are not part of the standard offerings to be provided and are purely demonstrative. The areas and dimensions shown are as per the plans approved/to be approved by the concerned authority and the same are subject to construction exigencies and variations. Intending purchasers are requested to verify all the details before acting in any manner with respect to the project. Project is financed by Piramal Trusteeship Services Private Limited.

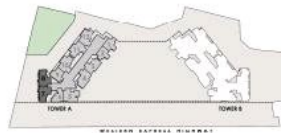


MAHARERA QR CODE



PLAN NOT TO SCALE

**4 BHK**  
**1378 SQ.FT.**



PLAN NOT TO SCALE

RERA CARPET AREA	ADDITIONAL AREA	TOTAL AREA
SQ.FT.	SQ.FT.	SQ.FT.
1317	50	1378

The project is currently marketed as World Above, (exclusively for 37<sup>th</sup> floors and above), and is registered on the MahaRERA website as Greenairy bearing MahaRERA registration no. P51800035093 Available on <https://maharera.mahaonline.gov.in>.

**BORIVALI, WEH**

The layout of the unit plan displayed is for indicative purposes only and is not a part of the standard offering. The furniture, fixtures, design and other arrangements as depicted above are not part of the standard offerings to be provided and are purely demonstrative. The areas and dimensions shown are as per the plans approved/to be approved by the concerned authority and the same are subject to construction exigencies and variations. Intending purchasers are requested to verify all the details before acting in any manner with respect to the project. Project is financed by Piramal Trusteeship Services Private Limited.



MAHARERA QR CODE

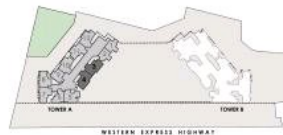
# WORLD ABOVE

AT CHANDAK GREENAIRY



PLAN NOT TO SCALE

**4 BHK**  
**1346 SQ.FT.**



PLAN NOT TO SCALE

RERA CARPET AREA	ADDITIONAL AREA	TOTAL AREA
SQ.FT.	SQ.FT.	SQ.FT.
1265	81	1346

The project is currently marketed as World Above, (exclusively for 37<sup>th</sup> floors and above), and is registered on the MahaRERA website as Greenairy bearing MahaRERA registration no. P51800035093 Available on <https://maharera.mahaonline.gov.in>.

**BORIVALI, WEH**

The layout of the unit plan displayed is for indicative purposes only and is not a part of the standard offering. The furniture, fixtures, design and other arrangements as depicted above are not part of the standard offerings to be provided and are purely demonstrative. The areas and dimensions shown are as per the plans approved/to be approved by the concerned authority and the same are subject to construction exigencies and variations. Intending purchasers are requested to verify all the details before acting in any manner with respect to the project. Project is financed by Piramal Trusteeship Services Private Limited.



MAHARERA QR CODE

# WORLD ABOVE

AT CHANDAK GREENAIRY



PLAN NOT TO SCALE

**4 BHK**  
**1346 SQ.FT.**



PLAN NOT TO SCALE

RERA CARPET AREA	ADDITIONAL AREA	TOTAL AREA
SQ.FT.	SQ.FT.	SQ.FT.
1265	81	1346

The project is currently marketed as World Above, (exclusively for 37<sup>th</sup> floors and above), and is registered on the MahaRERA website as Greenairy bearing MahaRERA registration no. P51800035093 Available on <https://maharera.mahaonline.gov.in>.

**BORIVALI, WEH**

The layout of the unit plan displayed is for indicative purposes only and is not a part of the standard offering. The furniture, fixtures, design and other arrangements as depicted above are not part of the standard offerings to be provided and are purely demonstrative. The areas and dimensions shown are as per the plans approved/to be approved by the concerned authority and the same are subject to construction exigencies and variations. Intending purchasers are requested to verify all the details before acting in any manner with respect to the project. Project is financed by Piramal Trusteeship Services Private Limited.



MAHARERA QR CODE



**4 BHK**  
**1327 SQ.FT.**



RERA CARPET AREA SQ.FT.	ADDITIONAL AREA SQ.FT.	TOTAL AREA SQ.FT.
1252	75	1327

The project is currently marketed as World Above, (exclusively for 37<sup>th</sup> floors and above), and is registered on the MahaRERA website as Greenairy bearing MahaRERA registration no. P51800035093 Available on <https://maharera.mahaonline.gov.in>.

**BORIVALI, WEH**

The layout of the unit plan displayed is for indicative purposes only and is not a part of the standard offering. The furniture, fixtures, design and other arrangements as depicted above are not part of the standard offerings to be provided and are purely demonstrative. The areas and dimensions shown are as per the plans approved/to be approved by the concerned authority and the same are subject to construction exigencies and variations. Intending purchasers are requested to verify all the details before acting in any manner with respect to the project. Project is financed by Piramal Trusteeship Services Private Limited.





PLAN NOT TO SCALE

**3 BHK**  
**1152 SQ.FT.**



PLAN NOT TO SCALE

RERA CARPET AREA	ADDITIONAL AREA	TOTAL AREA
SQ.FT.	SQ.FT.	SQ.FT.
1091	61	1152

The project is currently marketed as World Above, (exclusively for 37<sup>th</sup> floors and above), and is registered on the MahaRERA website as Greenairy bearing MahaRERA registration no. P51800035093 Available on <https://maharera.mahaonline.gov.in>.

**BORIVALI, WEH**

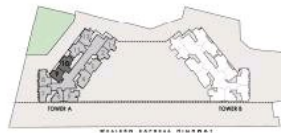
The layout of the unit plan displayed is for indicative purposes only and is not a part of the standard offering. The furniture, fixtures, design and other arrangements as depicted above are not part of the standard offerings to be provided and are purely demonstrative. The areas and dimensions shown are as per the plans approved/to be approved by the concerned authority and the same are subject to construction exigencies and variations. Intending purchasers are requested to verify all the details before acting in any manner with respect to the project. Project is financed by Piramal Trusteeship Services Private Limited.



MAHARERA QR CODE



**3 BHK**  
**1146 SQ.FT.**



RERA CARPET AREA	ADDITIONAL AREA	TOTAL AREA
SQ.FT.	SQ.FT.	SQ.FT.
1072	74	1146

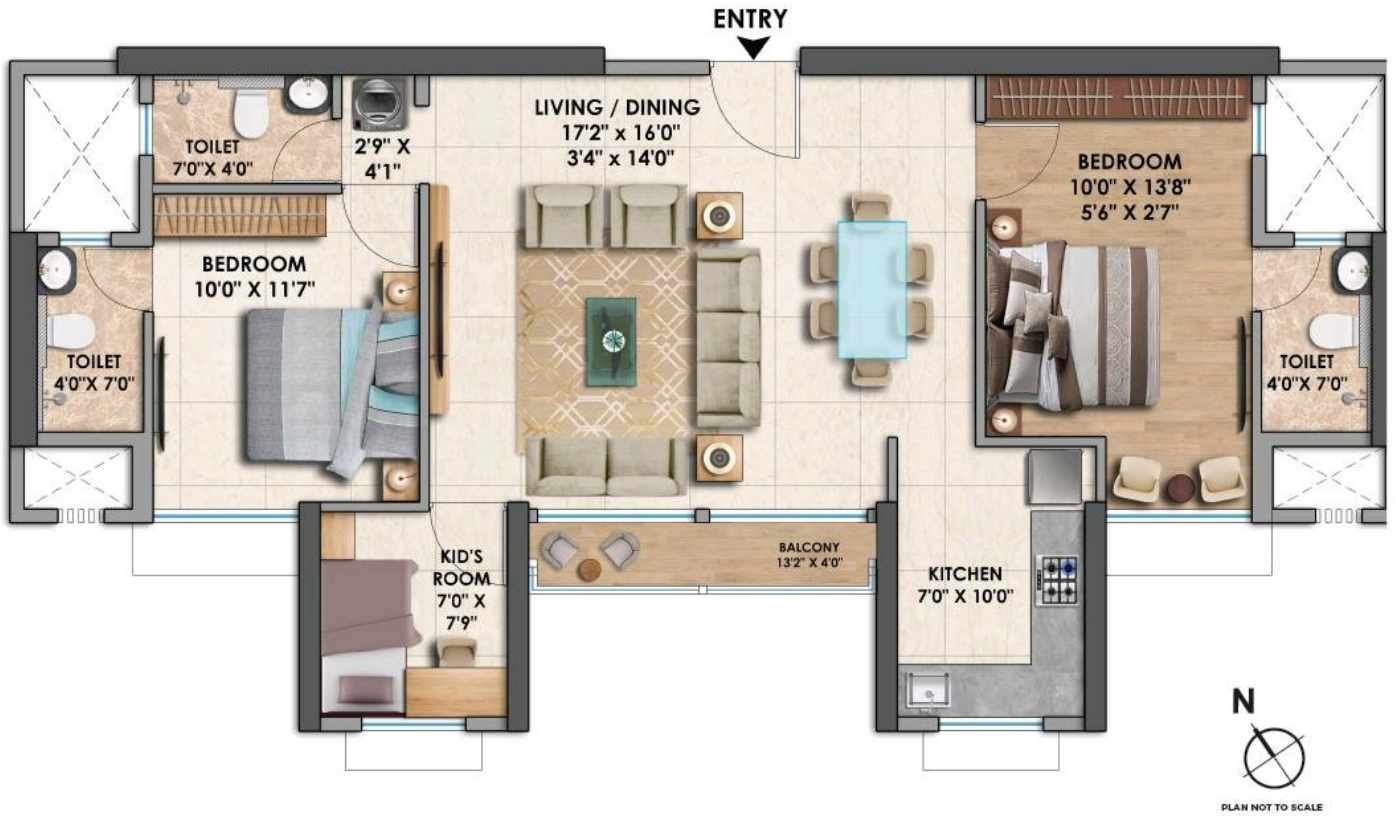
The project is currently marketed as World Above, (exclusively for 37<sup>th</sup> floors and above), and is registered on the MahaRERA website as Greenairy bearing MahaRERA registration no. P51800035093 Available on <https://maharera.mahaonline.gov.in>.

**BORIVALI, WEH**

The layout of the unit plan displayed is for indicative purposes only and is not a part of the standard offering. The furniture, fixtures, design and other arrangements as depicted above are not part of the standard offerings to be provided and are purely demonstrative. The areas and dimensions shown are as per the plans approved/to be approved by the concerned authority and the same are subject to construction exigencies and variations. Intending purchasers are requested to verify all the details before acting in any manner with respect to the project. Project is financed by Piramal Trusteeship Services Private Limited.



MAHARERA QR CODE



**3 BHK**  
**899 SQ.FT.**



RERA CARPET AREA	ADDITIONAL AREA	TOTAL AREA
SQ.FT.	SQ.FT.	SQ.FT.
849	50	899

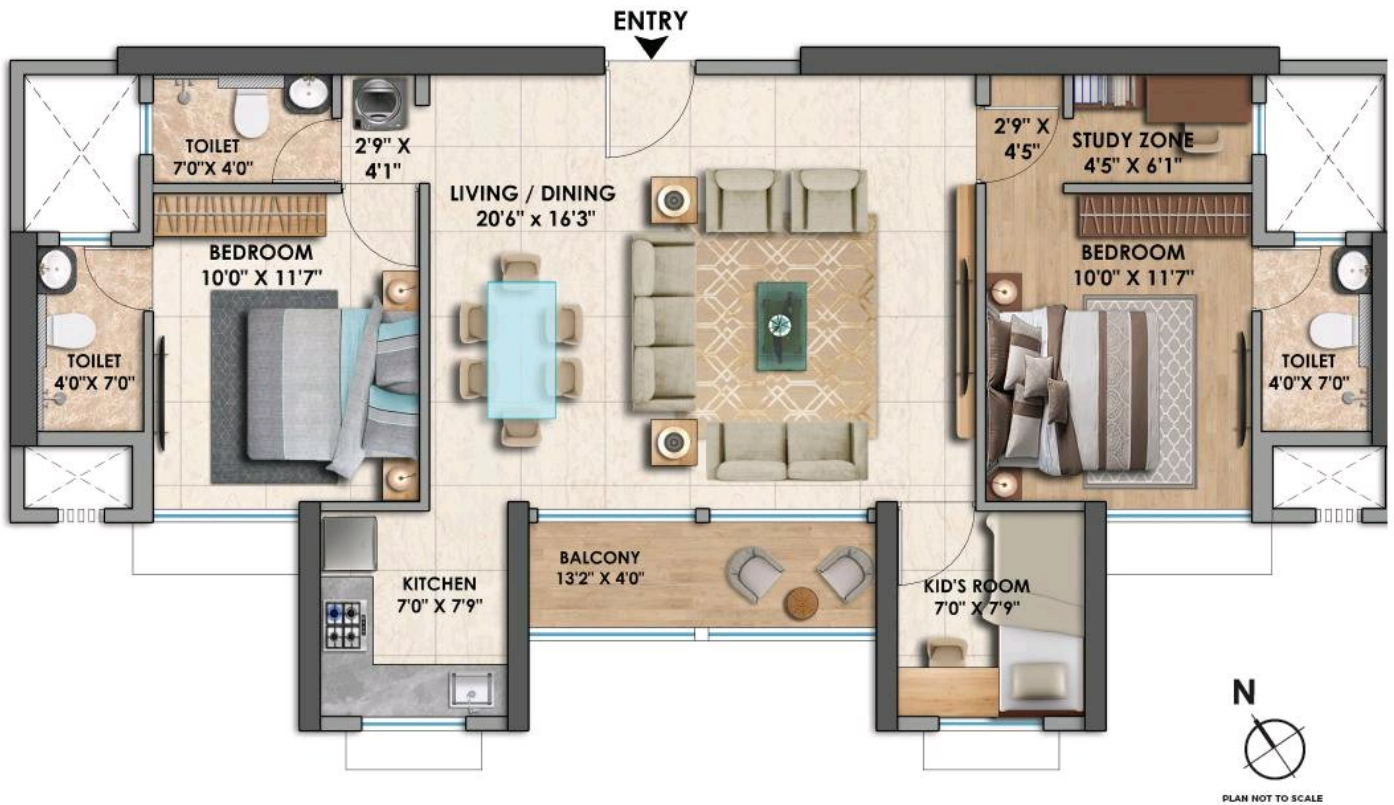
The project is currently marketed as World Above, (exclusively for 37<sup>th</sup> floors and above), and is registered on the MahaRERA website as Greenairy bearing MahaRERA registration no. P51800035093 Available on <https://maharera.mahaonline.gov.in>.

**BORIVALI, WEH**

The layout of the unit plan displayed is for indicative purposes only and is not a part of the standard offering. The furniture, fixtures, design and other arrangements as depicted above are not part of the standard offerings to be provided and are purely demonstrative. The areas and dimensions shown are as per the plans approved/to be approved by the concerned authority and the same are subject to construction exigencies and variations. Intending purchasers are requested to verify all the details before acting in any manner with respect to the project. Project is financed by Piramal Trusteeship Services Private Limited.



MAHARERA QR CODE



**3 BHK**  
**899 SQ.FT.**



RERA CARPET AREA	ADDITIONAL AREA	TOTAL AREA
SQ.FT.	SQ.FT.	SQ.FT.
849	50	899

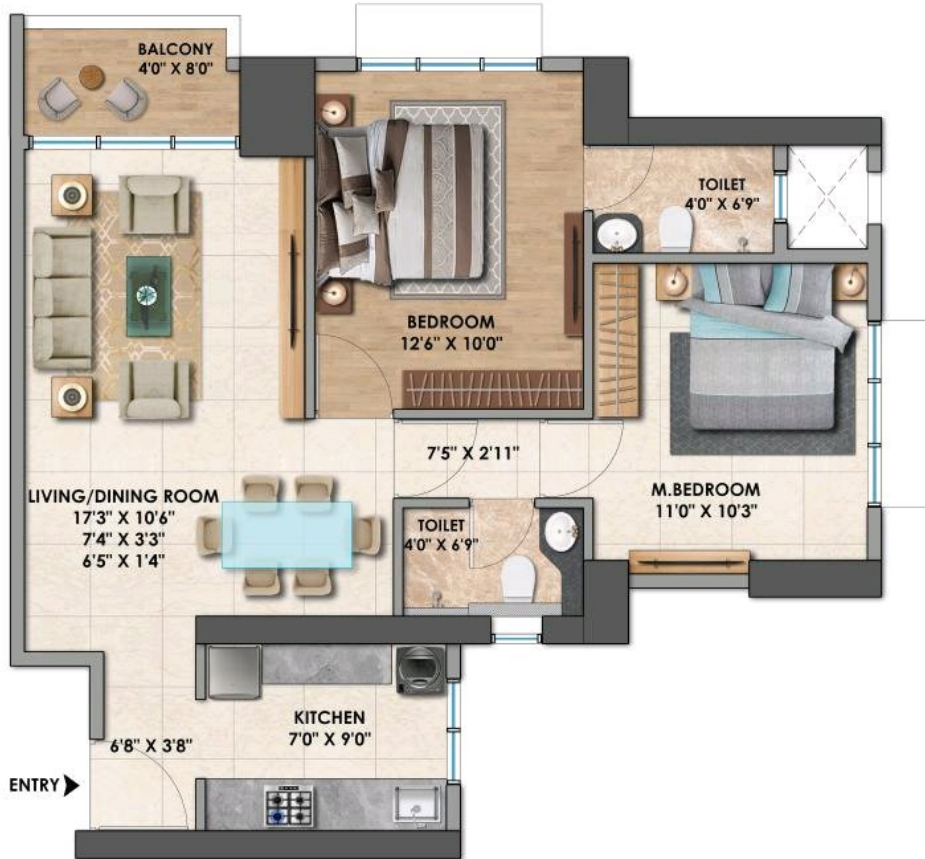
The project is currently marketed as World Above, (exclusively for 37<sup>th</sup> floors and above), and is registered on the MahaRERA website as Greenairy bearing MahaRERA registration no. P51800035093 Available on <https://maharera.mahaonline.gov.in>.

**BORIVALI, WEH**

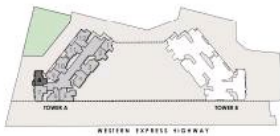
The layout of the unit plan displayed is for indicative purposes only and is not a part of the standard offering. The furniture, fixtures, design and other arrangements as depicted above are not part of the standard offerings to be provided and are purely demonstrative. The areas and dimensions shown are as per the plans approved/to be approved by the concerned authority and the same are subject to construction exigencies and variations. Intending purchasers are requested to verify all the details before acting in any manner with respect to the project. Project is financed by Piramal Trusteeship Services Private Limited.



MAHARERA QR CODE



**2 BHK**  
**683 SQ.FT.**



RERA CARPET AREA	ADDITIONAL AREA	TOTAL AREA
SQ.FT.	SQ.FT.	SQ.FT.
<b>653</b>	<b>30</b>	<b>683</b>

The project is currently marketed as World Above, (exclusively for 37<sup>th</sup> floors and above), and is registered on the MahaRERA website as Greenairy bearing MahaRERA registration no. P51800035093 Available on <https://maharera.mahaonline.gov.in>.

**BORIVALI, WEH**

The layout of the unit plan displayed is for indicative purposes only and is not a part of the standard offering. The furniture, fixtures, design and other arrangements as depicted above are not part of the standard offerings to be provided and are purely demonstrative. The areas and dimensions shown are as per the plans approved/to be approved by the concerned authority and the same are subject to construction exigencies and variations. Intending purchasers are requested to verify all the details before acting in any manner with respect to the project. Project is financed by Piramal Trusteeship Services Private Limited.



MAHARERA QR CODE



**2 BHK**  
**683 SQ.FT.**



RERA CARPET AREA	ADDITIONAL AREA	TOTAL AREA
SQ.FT.	SQ.FT.	SQ.FT.
<b>653</b>	<b>30</b>	<b>683</b>

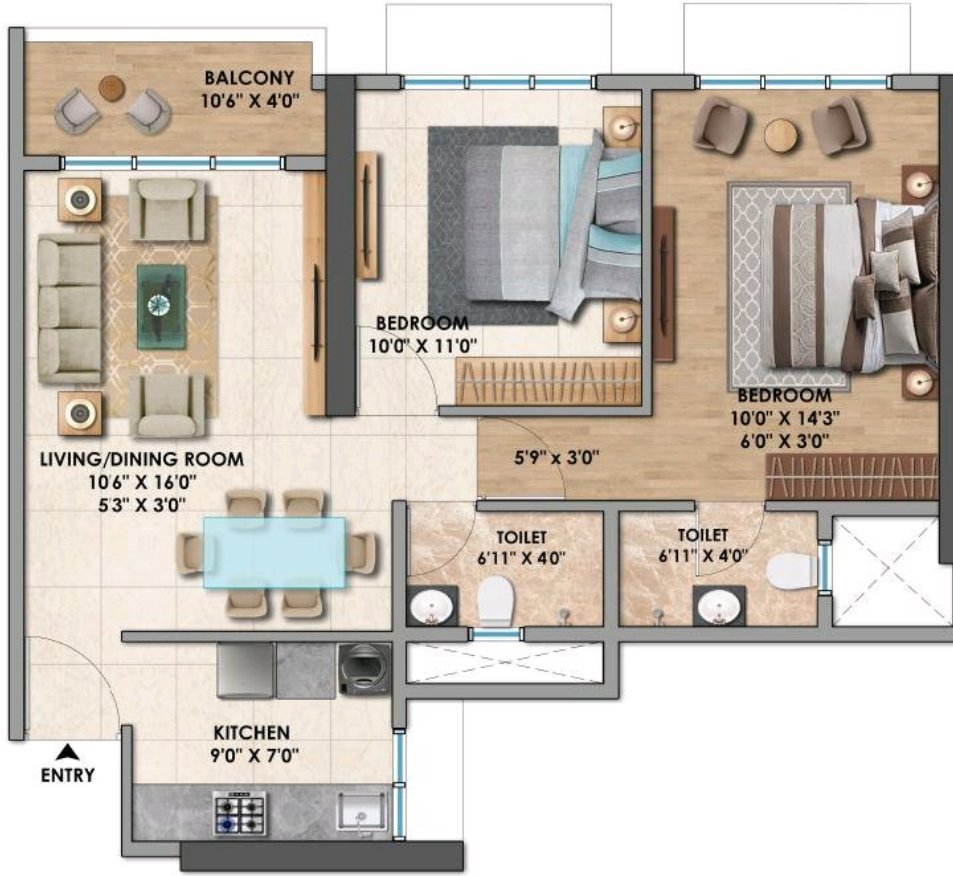
The project is currently marketed as World Above, (exclusively for 37<sup>th</sup> floors and above), and is registered on the MahaRERA website as Greenairy bearing MahaRERA registration no. P51800035093 Available on <https://maharera.mahaonline.gov.in>.

**BORIVALI, WEH**

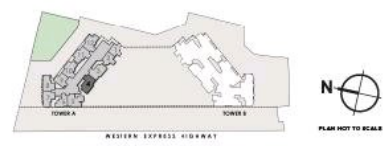
The layout of the unit plan displayed is for indicative purposes only and is not a part of the standard offering. The furniture, fixtures, design and other arrangements as depicted above are not part of the standard offerings to be provided and are purely demonstrative. The areas and dimensions shown are as per the plans approved/to be approved by the concerned authority and the same are subject to construction exigencies and variations. Intending purchasers are requested to verify all the details before acting in any manner with respect to the project. Project is financed by Piramal Trusteeship Services Private Limited.



MAHARERA QR CODE



**2 BHK**  
**669 SQ.FT.**



RERA CARPET AREA	ADDITIONAL AREA	TOTAL AREA
SQ.FT.	SQ.FT.	SQ.FT.
629	40	669

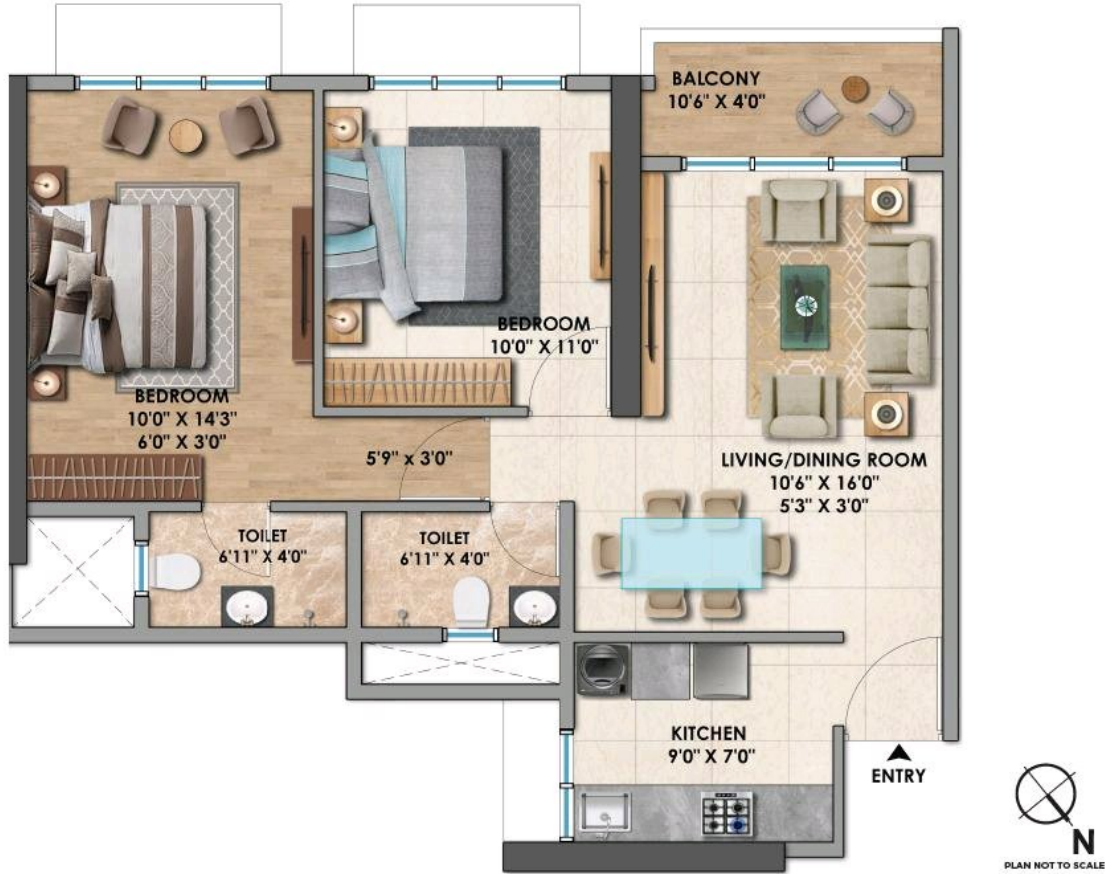
The project is currently marketed as World Above, (exclusively for 37<sup>th</sup> floors and above), and is registered on the MahaRERA website as Greenairy bearing MahaRERA registration no. P51800035093 Available on <https://maharera.mahaonline.gov.in>. **BORIVALI, WEH**

The layout of the unit plan displayed is for indicative purposes only and is not a part of the standard offering. The furniture, fixtures, design and other arrangements as depicted above are not part of the standard offerings to be provided and are purely demonstrative. The areas and dimensions shown are as per the plans approved/to be approved by the concerned authority and the same are subject to construction exigencies and variations. Intending purchasers are requested to verify all the details before acting in any manner with respect to the project. Project is financed by Piramal Trusteeship Services Private Limited.



# WORLD ABOVE

AT CHANDAK GREENAIRY



**2 BHK**  
**669 SQ.FT.**



RERA CARPET AREA SQ.FT.	ADDITIONAL AREA SQ.FT.	TOTAL AREA SQ.FT.
629	40	669

The project is currently marketed as World Above, (exclusively for 37<sup>th</sup> floors and above), and is registered on the MahaRERA website as Greenairy bearing MahaRERA registration no. P51800035093 Available on <https://maharera.mahaonline.gov.in>.

**BORIVALI, WEH**

The layout of the unit plan displayed is for indicative purposes only and is not a part of the standard offering. The furniture, fixtures, design and other arrangements as depicted above are not part of the standard offerings to be provided and are purely demonstrative. The areas and dimensions shown are as per the plans approved/to be approved by the concerned authority and the same are subject to construction exigencies and variations. Intending purchasers are requested to verify all the details before acting in any manner with respect to the project. Project is financed by Piramal Trusteeship Services Private Limited.





**2 BHK**  
**667 SQ.FT.**



RERA CARPET AREA SQ.FT.	ADDITIONAL AREA SQ.FT.	TOTAL AREA SQ.FT.
636	31	667

The project is currently marketed as World Above, (exclusively for 37<sup>th</sup> floors and above), and is registered on the MahaRERA website as Greenairy bearing MahaRERA registration no. P51800035093 Available on <https://maharera.mahaonline.gov.in>.

**BORIVALI, WEH**

The layout of the unit plan displayed is for indicative purposes only and is not a part of the standard offering. The furniture, fixtures, design and other arrangements as depicted above are not part of the standard offerings to be provided and are purely demonstrative. The areas and dimensions shown are as per the plans approved/to be approved by the concerned authority and the same are subject to construction exigencies and variations. Intending purchasers are requested to verify all the details before acting in any manner with respect to the project. Project is financed by Piramal Trusteeship Services Private Limited.



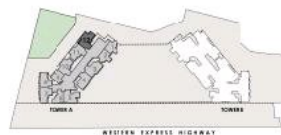
MAHARERA QR CODE

# WORLD ABOVE

AT CHANDAK GREENAIRY



**2 BHK**  
**661 SQ.FT.**



RERA CARPET AREA	ADDITIONAL AREA	TOTAL AREA
SQ.FT.	SQ.FT.	SQ.FT.
624	37	683

The project is currently marketed as World Above, (exclusively for 37<sup>th</sup> floors and above), and is registered on the MahaRERA website as Greenairy bearing MahaRERA registration no. P51800035093 Available on <https://maharera.mahaonline.gov.in>.

**BORIVALI, WEH**

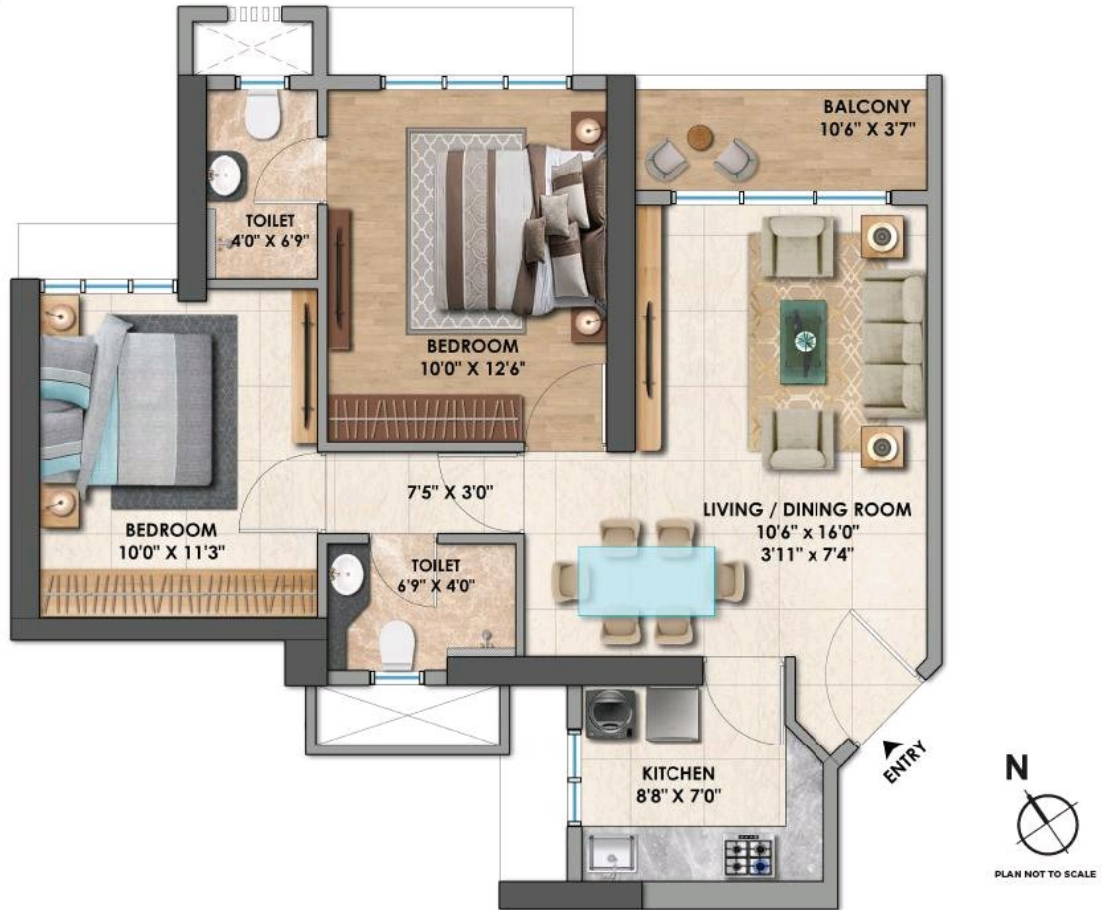
The layout of the unit plan displayed is for indicative purposes only and is not a part of the standard offering. The furniture, fixtures, design and other arrangements as depicted above are not part of the standard offerings to be provided and are purely demonstrative. The areas and dimensions shown are as per the plans approved/to be approved by the concerned authority and the same are subject to construction exigencies and variations. Intending purchasers are requested to verify all the details before acting in any manner with respect to the project. Project is financed by Piramal Trusteeship Services Private Limited.



MAHARERA QR CODE

**WORLD ABOVE**  
AT CHANDAK GREENAIRY

**CHANDAK**  
PROMISES MADE. PROMISES KEPT.



**2 BHK**  
**661 SQ.FT.**



RERA CARPET AREA	ADDITIONAL AREA	TOTAL AREA
SQ.FT.	SQ.FT.	SQ.FT.
624	37	683

The project is currently marketed as World Above, (exclusively for 37<sup>th</sup> floors and above), and is registered on the MahaRERA website as Greenairy bearing MahaRERA registration no. P51800035093 Available on <https://maharera.mahaonline.gov.in>.

**BORIVALI, WEH**

The layout of the unit plan displayed is for indicative purposes only and is not a part of the standard offering. The furniture, fixtures, design and other arrangements as depicted above are not part of the standard offerings to be provided and are purely demonstrative. The areas and dimensions shown are as per the plans approved/to be approved by the concerned authority and the same are subject to construction exigencies and variations. Intending purchasers are requested to verify all the details before acting in any manner with respect to the project. Project is financed by Piramal Trusteeship Services Private Limited.



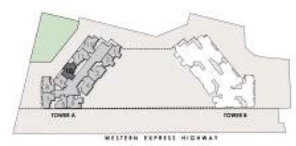
MAHARERA QR CODE

# WORLD ABOVE

AT CHANDAK GREENAIRY



**2 BHK**  
**661 SQ.FT.**



RERA CARPET AREA	ADDITIONAL AREA	TOTAL AREA
SQ.FT.	SQ.FT.	SQ.FT.
624	37	683

The project is currently marketed as World Above, (exclusively for 37<sup>th</sup> floors and above), and is registered on the MahaRERA website as Greenairy bearing MahaRERA registration no. P51800035093 Available on <https://maharera.mahaonline.gov.in>.

**BORIVALI, WEH**

The layout of the unit plan displayed is for indicative purposes only and is not a part of the standard offering. The furniture, fixtures, design and other arrangements as depicted above are not part of the standard offerings to be provided and are purely demonstrative. The areas and dimensions shown are as per the plans approved/to be approved by the concerned authority and the same are subject to construction exigencies and variations. Intending purchasers are requested to verify all the details before acting in any manner with respect to the project. Project is financed by Piramal Trusteeship Services Private Limited.

